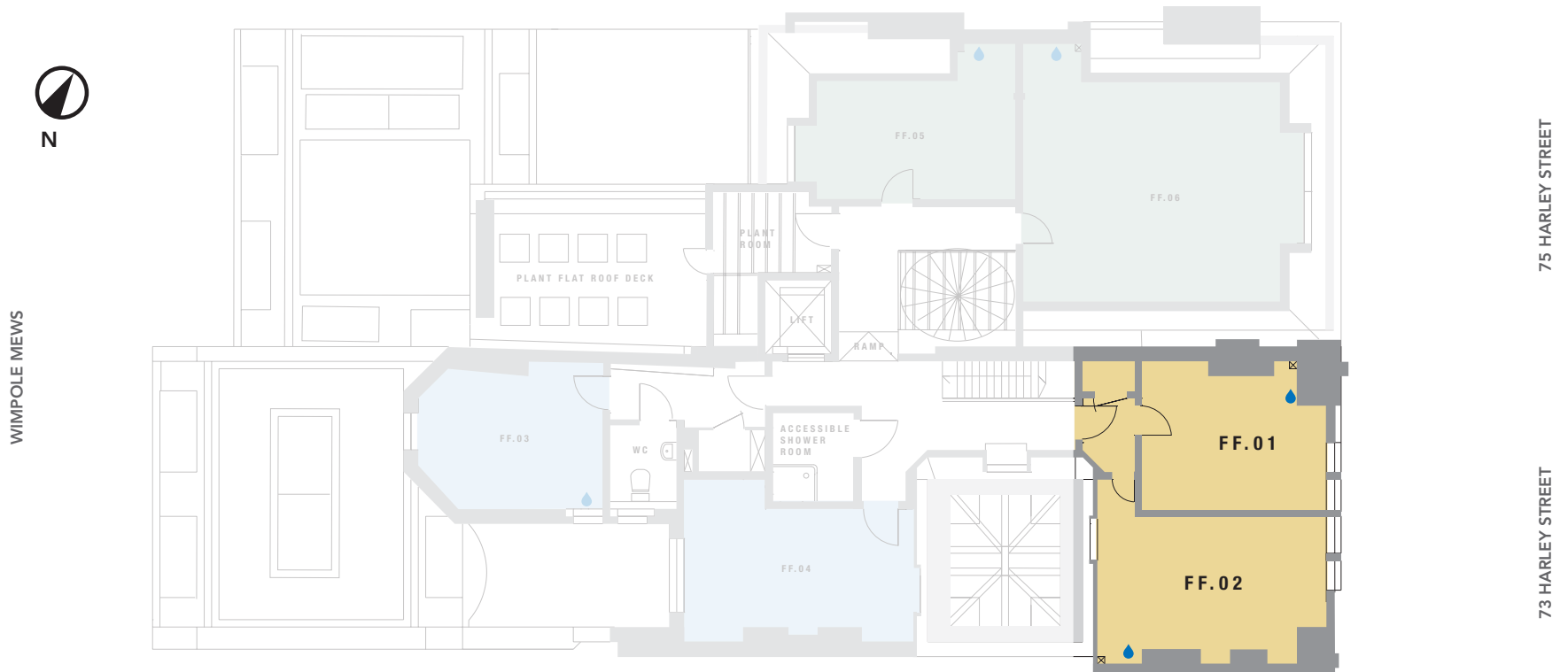


# FOURTH FLOOR SUITE 18

TOTAL : 426.25 sq ft / 39.60 sq m

N<sup>o</sup>. 75  
HARLEY STREET  
MARYLEBONE W1



NOTE: all areas are approximate and will be verified on completion in accordance with RICS Code of Measuring Practice.

FF.01 : 187.40 sq ft / 17.41 sq m

FF.02 : 238.85 sq ft / 22.19 sq m

 Capped off water, drainage & electricity for hand basins

**THE  
HOWARD  
de  
WALDEN  
ESTATE**

**MEDICAL LETTINGS**

t: +44 (0)20 7290 0970

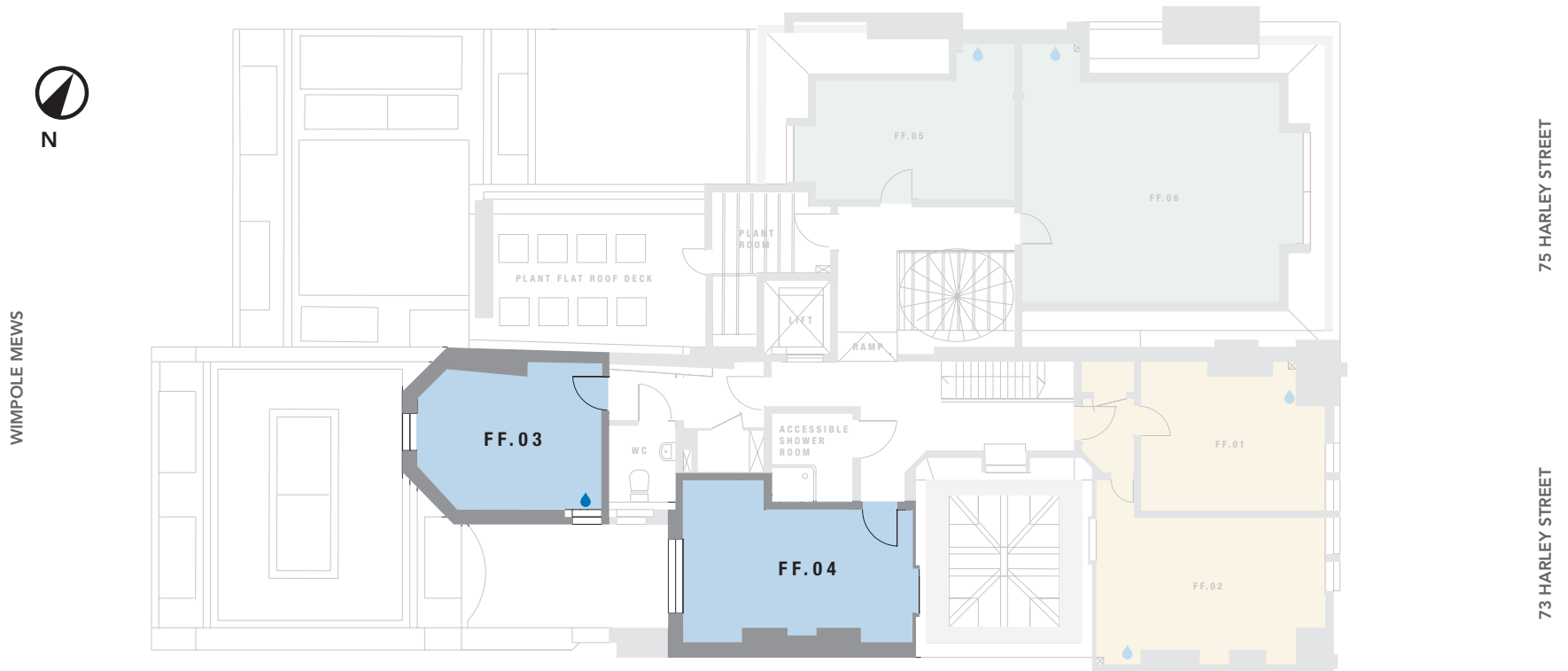
e: medical@hdwe.co.uk

w: hdwe.co.uk

# FOURTH FLOOR SUITE 19

TOTAL : 408.39 sq ft / 37.94 sq m

N<sup>o</sup>. 75  
HARLEY STREET  
MARYLEBONE W1



NOTE: all areas are approximate and will be verified on completion in accordance with RICS Code of Measuring Practice.

FF.03 : 183.53 sq ft / 17.05 sq m

FF.04 : 224.86 sq ft / 20.89 sq m

 Capped off water, drainage & electricity for hand basins

**THE  
HOWARD  
de WALDEN  
ESTATE**

**MEDICAL LETTINGS**

t: +44 (0)20 7290 0970

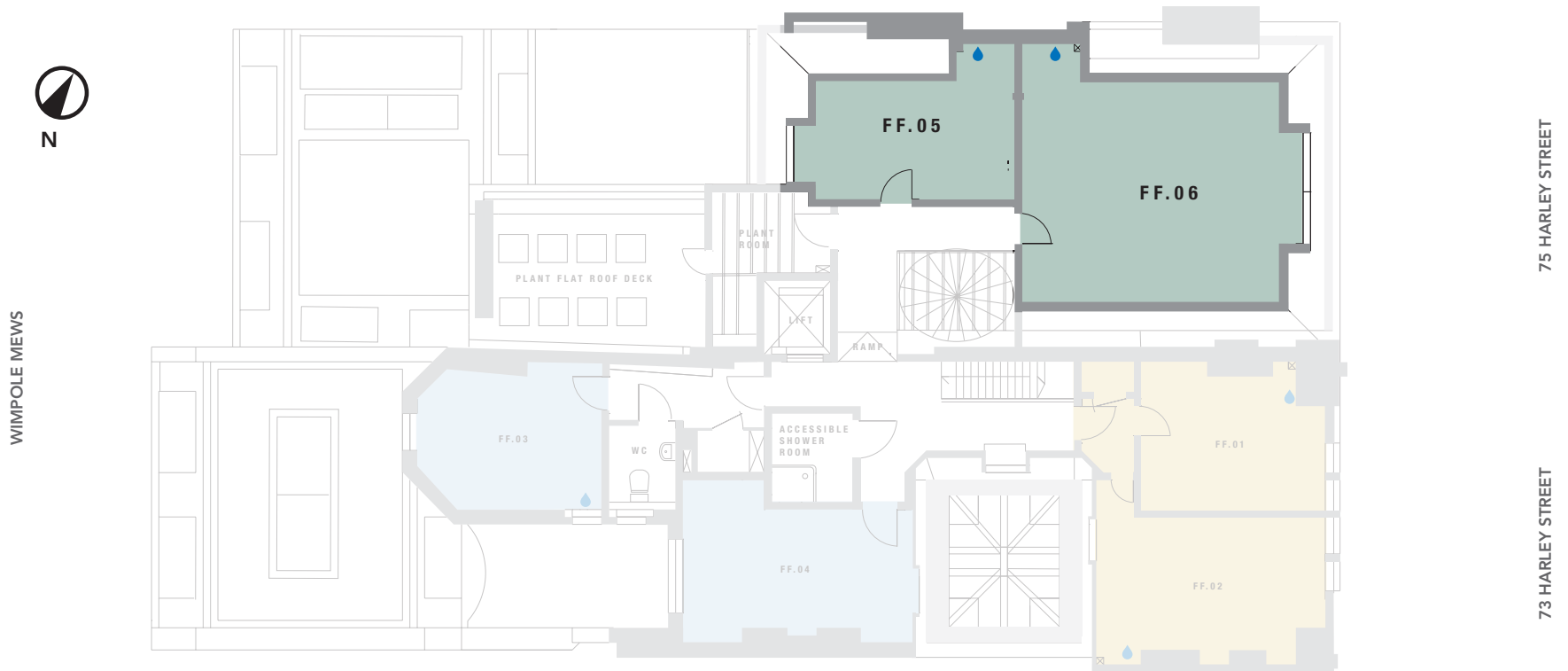
e: medical@hdwe.co.uk

w: hdwe.co.uk

# FOURTH FLOOR SUITE 20

TOTAL : 650.14 sq ft / 60.40 sq m

N<sup>o</sup>. 75  
HARLEY STREET  
MARYLEBONE W1



NOTE: all areas are approximate and will be verified on completion in accordance with RICS Code of Measuring Practice.

FF.05 : 199.13 sq ft / 18.50 sq m

FF.06 : 451.01 sq ft / 41.90 sq m

 Capped off water, drainage & electricity for hand basins

**THE  
HOWARD  
de  
WALDEN  
ESTATE**

**MEDICAL LETTINGS**

t: +44 (0)20 7290 0970

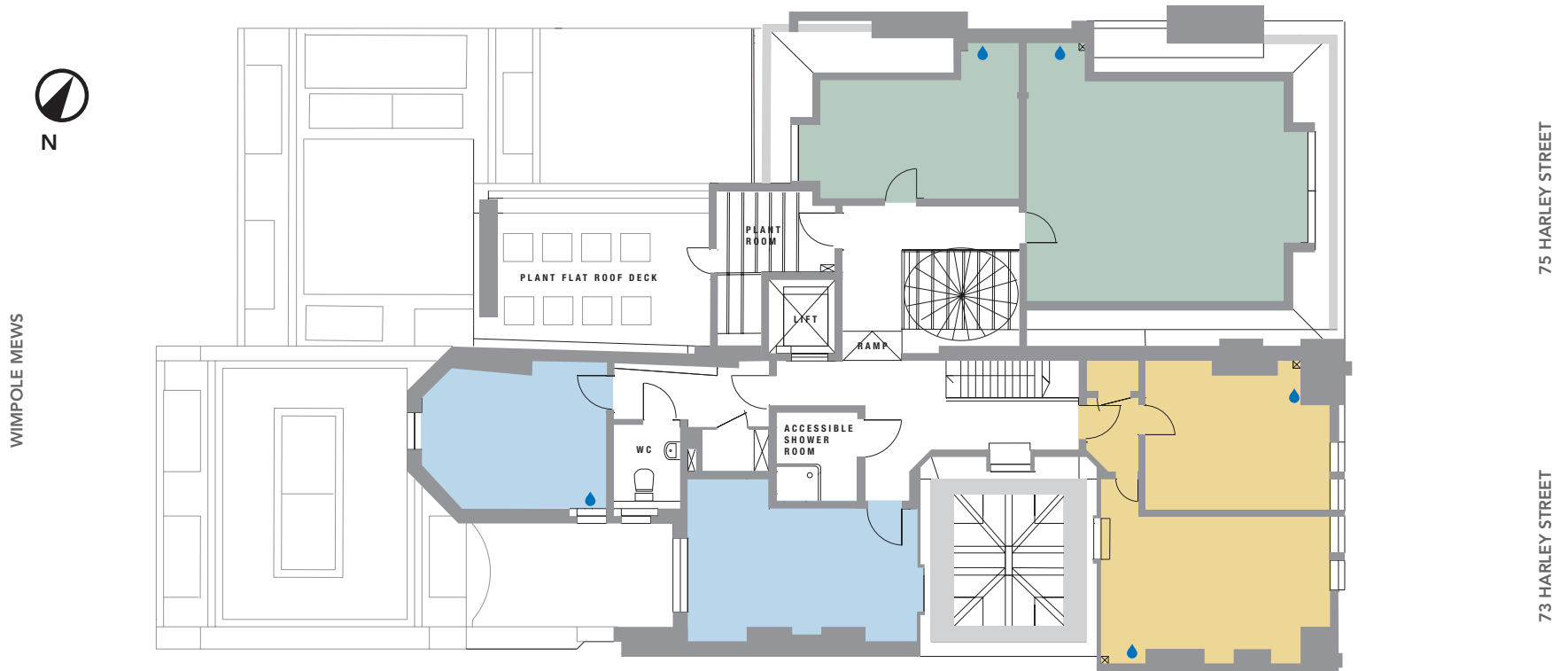
e: medical@hdwe.co.uk

w: hdwe.co.uk

# FOURTH FLOOR

TOTAL : 1,484.78 sq ft / 137.94 sq m

N<sup>o</sup>. 75  
HARLEY STREET  
MARYLEBONE W1



NOTE: all areas are approximate and will be verified on completion in accordance with RICS Code of Measuring Practice.

■ Suite 18   ■ Suite 19   ■ Suite 20   ■ Capped off water, drainage & electricity for hand basins

**THE HOWARD  
de WALDEN  
ESTATE**

**MEDICAL LETTINGS**  
t: +44 (0)20 7290 0970  
e: medical@hdwe.co.uk  
w: hdwe.co.uk