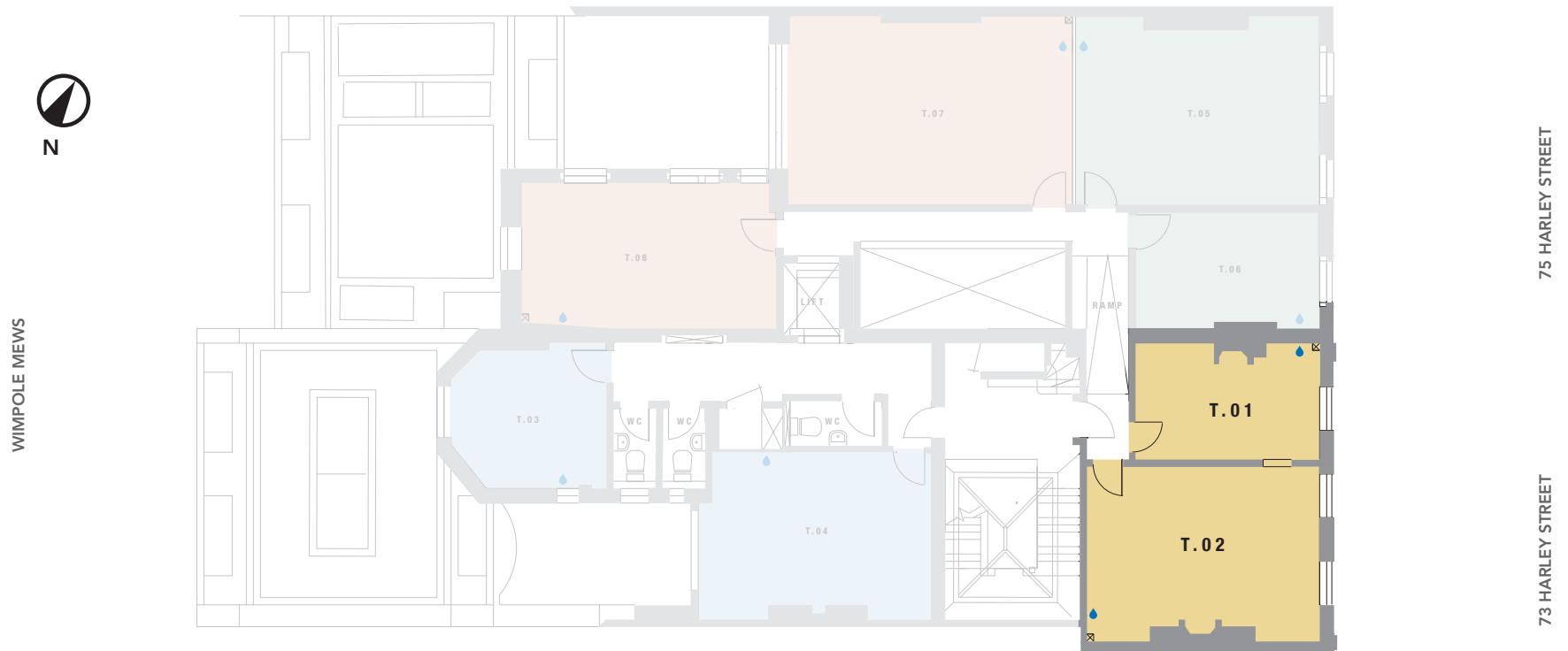


THIRD FLOOR SUITE 14

TOTAL : 452.19 sq ft / 42.01 sq m

N^o. 75
HARLEY STREET
MARYLEBONE W1



NOTE: all areas are approximate and will be verified on completion in accordance with RICS Code of Measuring Practice.

T.01 : 145.74 sq ft / 13.54 sq m

T.02 : 306.45 sq ft / 28.47 sq m

 Capped off water, drainage & electricity for hand basins

**THE
HOWARD
de
WALDEN
ESTATE**

MEDICAL LETTINGS

t: +44 (0)20 7290 0970

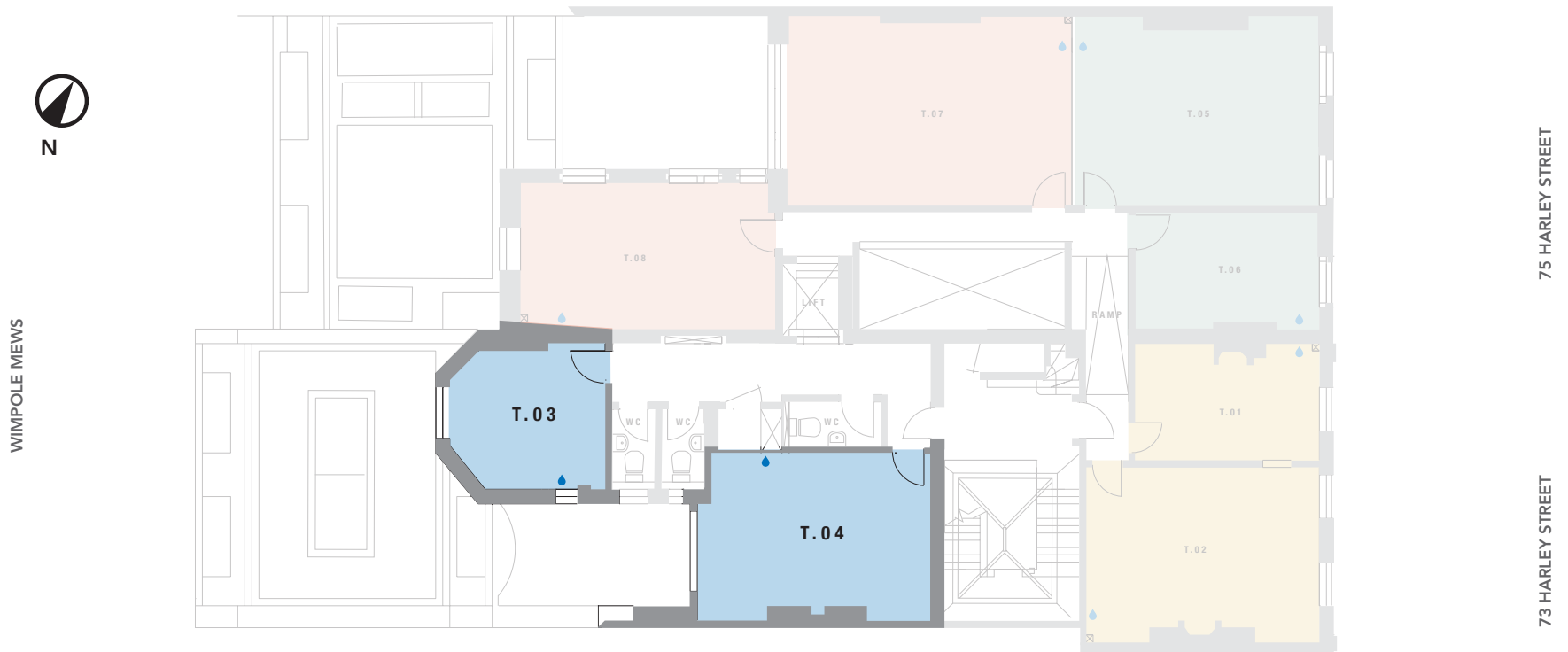
e: medical@hdwe.co.uk

w: hdwe.co.uk

THIRD FLOOR SUITE 15

TOTAL : 430.45 sq ft / 39.99 sq m

N^o. 75
HARLEY STREET
MARYLEBONE W1



NOTE: all areas are approximate and will be verified on completion in accordance with RICS Code of Measuring Practice.

T.03 : 159.63 sq ft / 14.83 sq m

T.04 : 270.82 sq ft / 25.16 sq m

 Capped off water, drainage & electricity for hand basins

**THE
HOWARD
de
WALDEN
ESTATE**

MEDICAL LETTINGS

t: +44 (0)20 7290 0970

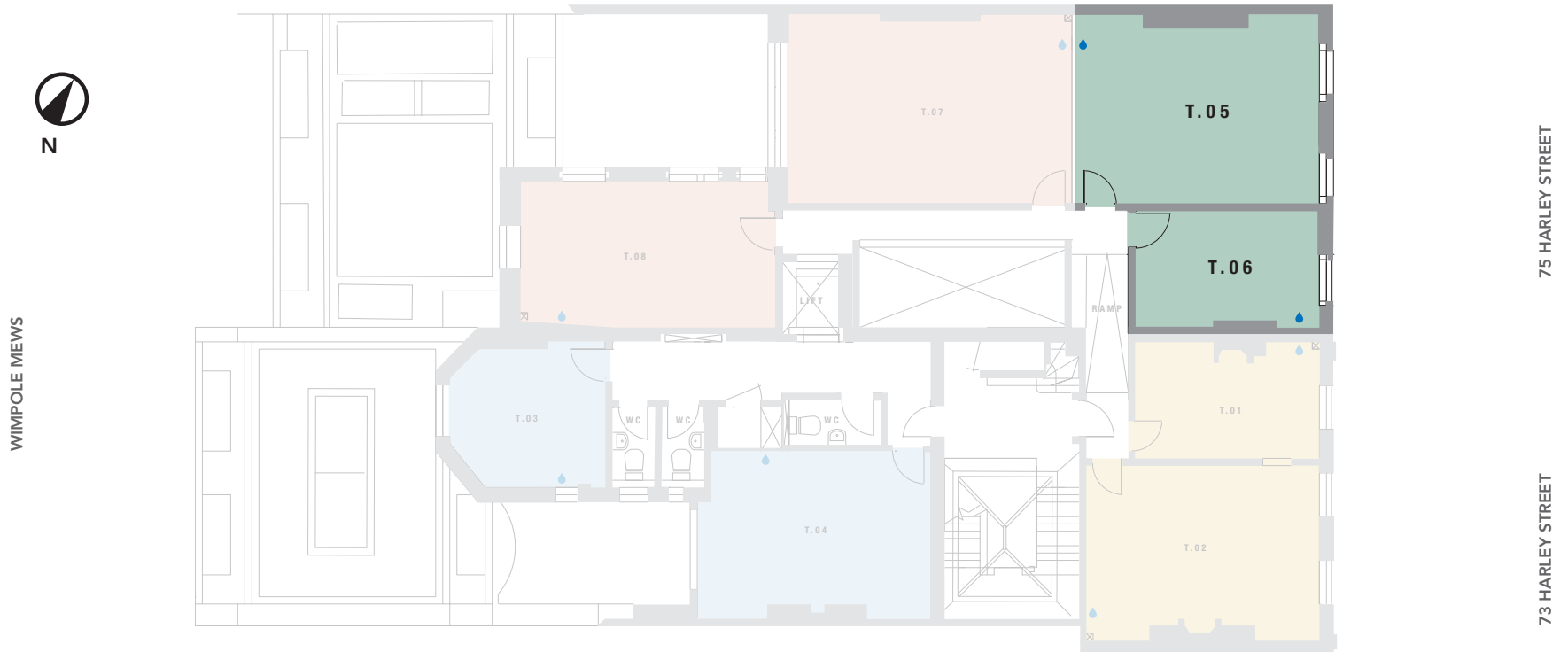
e: medical@hdwe.co.uk

w: hdwe.co.uk

THIRD FLOOR SUITE 16

TOTAL : 498.92 sq ft / 46.35 sq m

N^o. 75
HARLEY STREET
MARYLEBONE W1



NOTE: all areas are approximate and will be verified on completion in accordance with RICS Code of Measuring Practice.

T.05 : 330.89 sq ft / 30.74 sq m

T.06 : 168.03 sq ft / 15.61 sq m

 Capped off water, drainage & electricity for hand basins

**THE
HOWARD
de
WALDEN
ESTATE**

MEDICAL LETTINGS

t: +44 (0)20 7290 0970

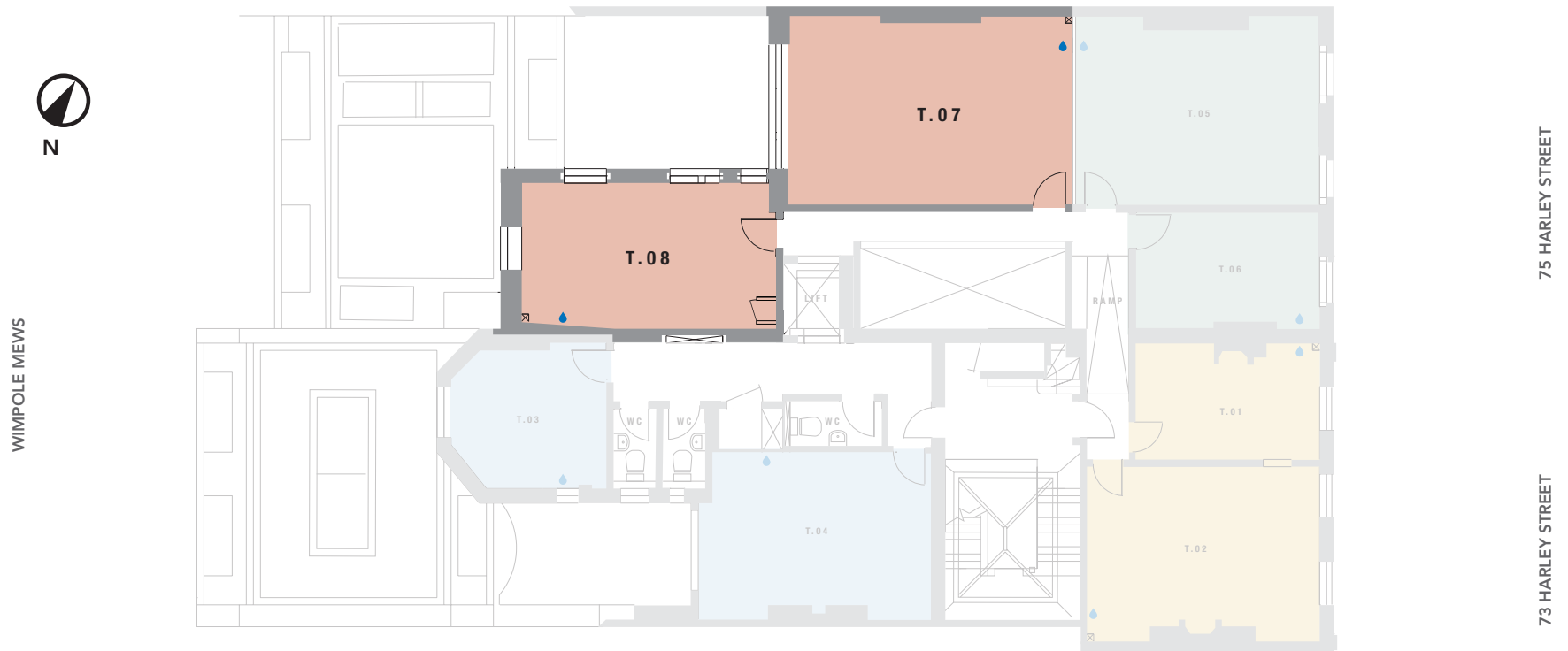
e: medical@hdwe.co.uk

w: hdwe.co.uk

THIRD FLOOR SUITE 17

TOTAL : 674.36 sq ft / 62.65 sq m

N^o. 75
HARLEY STREET
MARYLEBONE W1



NOTE: all areas are approximate and will be verified on completion in accordance with RICS Code of Measuring Practice.

T.07 : 268.45 sq ft / 24.94 sq m

T.08 : 405.91 sq ft / 37.71 sq m

 Capped off water, drainage & electricity for hand basins

**THE
HOWARD
de WALDEN
ESTATE**

MEDICAL LETTINGS

t: +44 (0)20 7290 0970

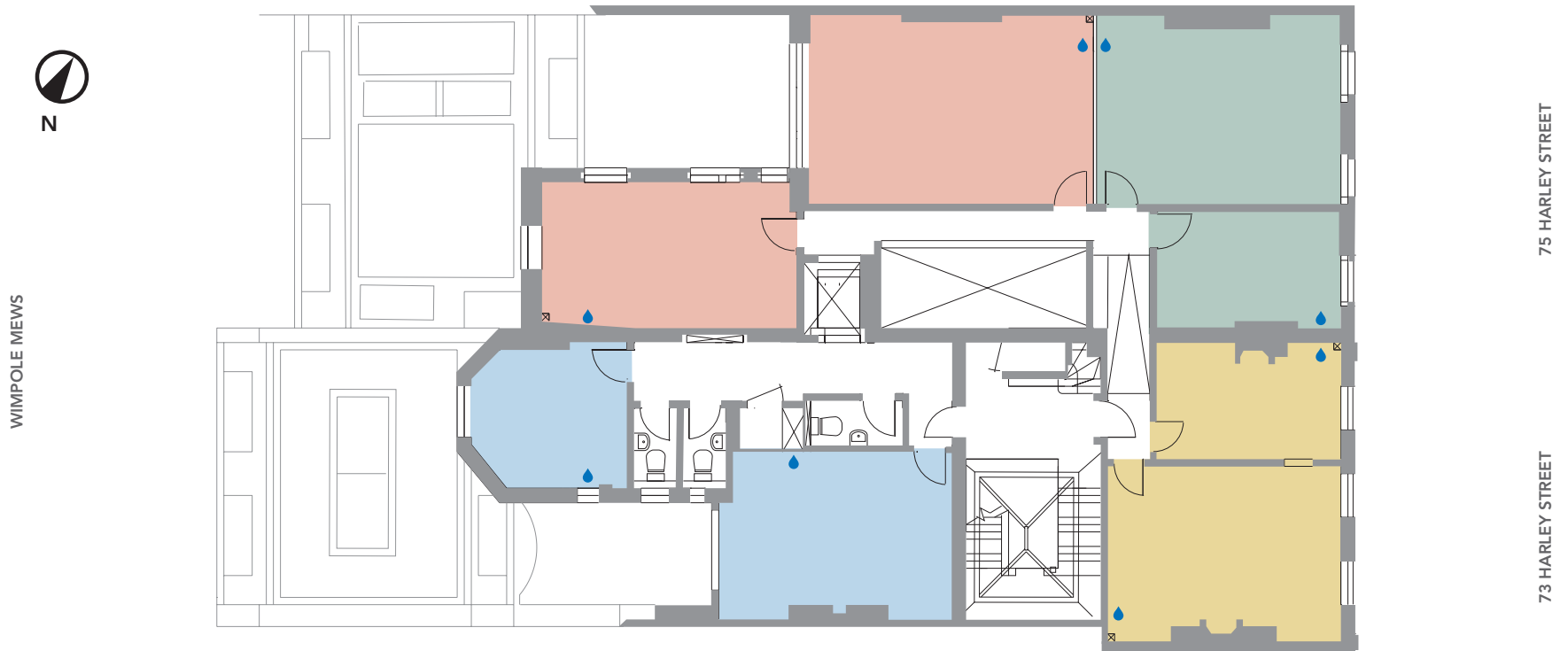
e: medical@hdwe.co.uk

w: hdwe.co.uk

THIRD FLOOR

TOTAL : 2,055.92 sq ft / 191 sq m

N^o. 75
HARLEY STREET
MARYLEBONE W1



NOTE: all areas are approximate and will be verified on completion in accordance with RICS Code of Measuring Practice.

■ Suite 14 ■ Suite 15 ■ Suite 16 ■ Suite 17 ■ Capped off water, drainage & electricity for hand basins

**THE
HOWARD
de WALDEN
ESTATE**

MEDICAL LETTINGS
t: +44 (0)20 7290 0970
e: medical@hdwe.co.uk
w: hdwe.co.uk